

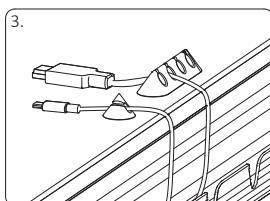
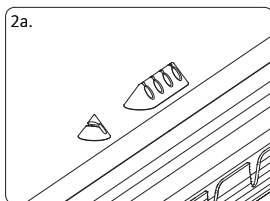
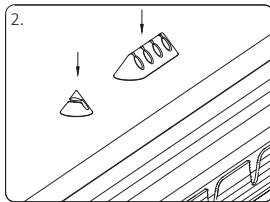
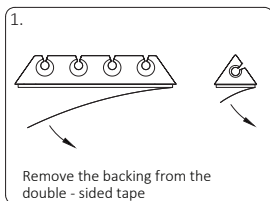


**STEP 1.**  
Remove the backing from double-sided tape.

**STEP 2.**  
With all monitors, accessories and Wire Management in place, decide where to place the Cable Holder.

Choose the best position for the Cable Holder and place it firmly to a work-surface edge.

**STEP 3.**  
Push cables into the Cable Holder.



2400.400.SFI

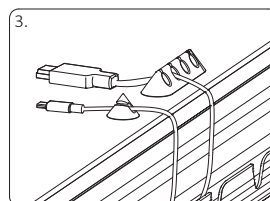
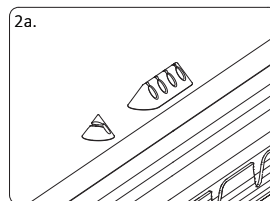
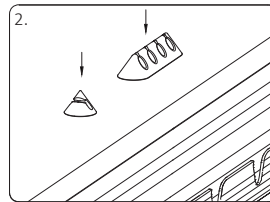
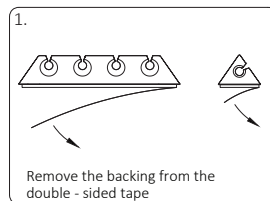


**STEP 1.**  
Remove the backing from double-sided tape.

**STEP 2.**  
With all monitors, accessories and Wire Management in place, decide where to place the Cable Holder.

Choose the best position for the Cable Holder and place it firmly to a work-surface edge.

**STEP 3.**  
Push cables into the Cable Holder.



2400.400.SFI

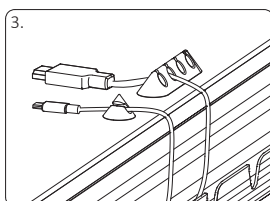
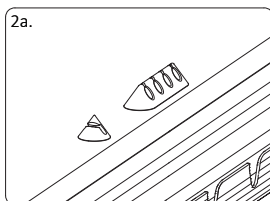
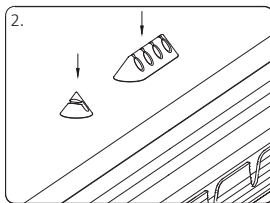
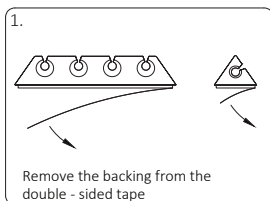


**STEP 1.**  
Remove the backing from double-sided tape.

**STEP 2.**  
With all monitors, accessories and Wire Management in place, decide where to place the Cable Holder.

Choose the best position for the Cable Holder and place it firmly to a work-surface edge.

**STEP 3.**  
Push cables into the Cable Holder.



2400.400.SFI

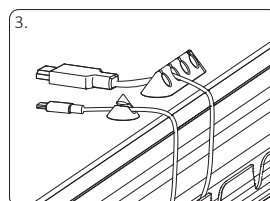
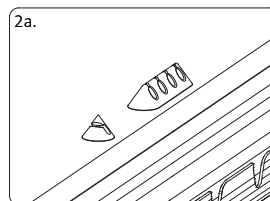
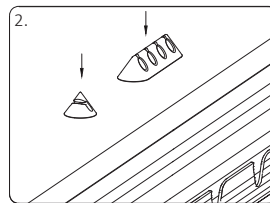
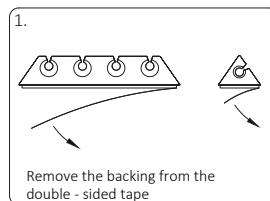


**STEP 1.**  
Remove the backing from double-sided tape.

**STEP 2.**  
With all monitors, accessories and Wire Management in place, decide where to place the Cable Holder.

Choose the best position for the Cable Holder and place it firmly to a work-surface edge.

**STEP 3.**  
Push cables into the Cable Holder.



2400.400.SFI