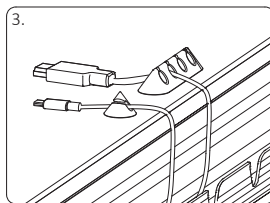
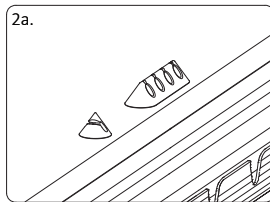
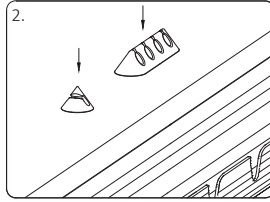
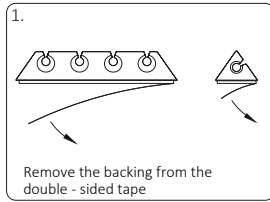
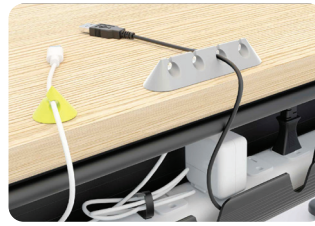




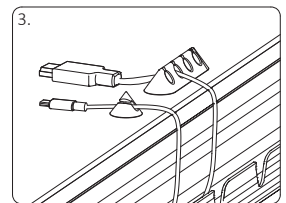
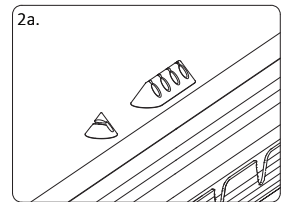
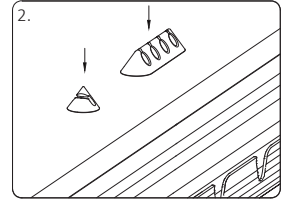
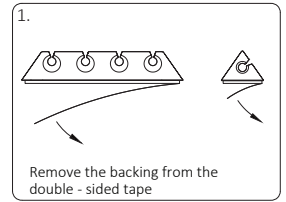
- STEP 1.**
Remove the backing from double-sided tape.
- STEP 2.**
With all monitors, accessories and Wire Management in place, decide where to place the Cable Holder.
- Choose the best position for the Cable Holder and place it firmly to a work-surface edge.
- STEP 3.**
Push cables into the Cable Holder.



2400.400.SFI



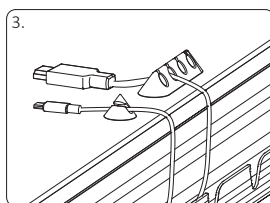
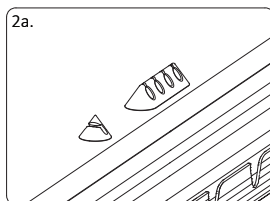
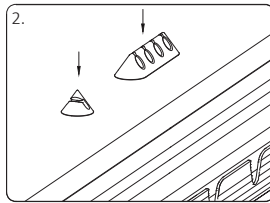
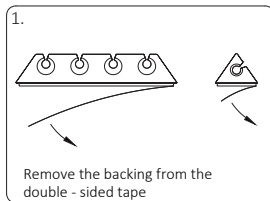
- STEP 1.**
Remove the backing from double-sided tape.
- STEP 2.**
With all monitors, accessories and Wire Management in place, decide where to place the Cable Holder.
- Choose the best position for the Cable Holder and place it firmly to a work-surface edge.
- STEP 3.**
Push cables into the Cable Holder.



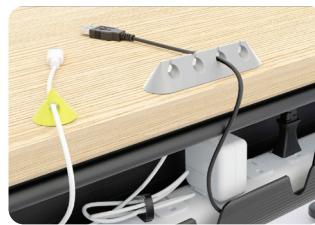
2400.400.SFI



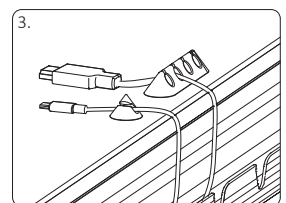
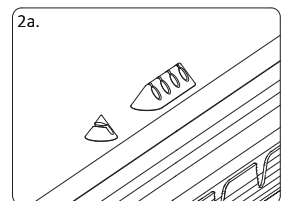
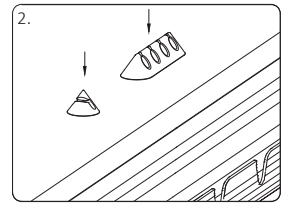
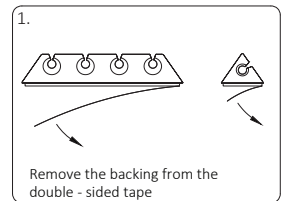
- STEP 1.**
Remove the backing from double-sided tape.
- STEP 2.**
With all monitors, accessories and Wire Management in place, decide where to place the Cable Holder.
- Choose the best position for the Cable Holder and place it firmly to a work-surface edge.
- STEP 3.**
Push cables into the Cable Holder.



2400.400.SFI



- STEP 1.**
Remove the backing from double-sided tape.
- STEP 2.**
With all monitors, accessories and Wire Management in place, decide where to place the Cable Holder.
- Choose the best position for the Cable Holder and place it firmly to a work-surface edge.
- STEP 3.**
Push cables into the Cable Holder.



2400.400.SFI